

STAY INFORMED ATTEND ROUNDTABLE



March 2021

Send a representative from your Pack or Troop to stay informed on upcoming events, program updates and trainings.

STAY INFORMED ATTEND ROUNDTABLE

[View this info @
https://www.cornhuskercouncil.org/about
us/districts.html](https://www.cornhuskercouncil.org/about-us/districts.html)



[Click here to
view all this
great
information](#)

Send a representative from your Pack or Troop to stay informed on upcoming events, program updates and trainings.



**Grab some Scout popcorn
and enjoy the
Virtual Midway.**

**Round Table Main Session
Begins at 7:00PM**

THE COMMISSIONER

A PUBLICATION FOR COMMISSIONERS AND PROFESSIONALS



www.scouting.org/commissioners



BOY SCOUTS OF AMERICA®

Prepared. For Life.®

Anyone with a servant's heart who represents the values of the Scout Oath and Law and reflects the communities our units serve is a candidate to be a commissioner; we can train willing volunteers who meet these standards to serve units.

**Contact District Commissioner Bill Lang @ wlang@neb.rr.com
to become a Unit Commissioner**



A SAFETY MOM

Weather – Related

THE SCOUTING GUIDE TO

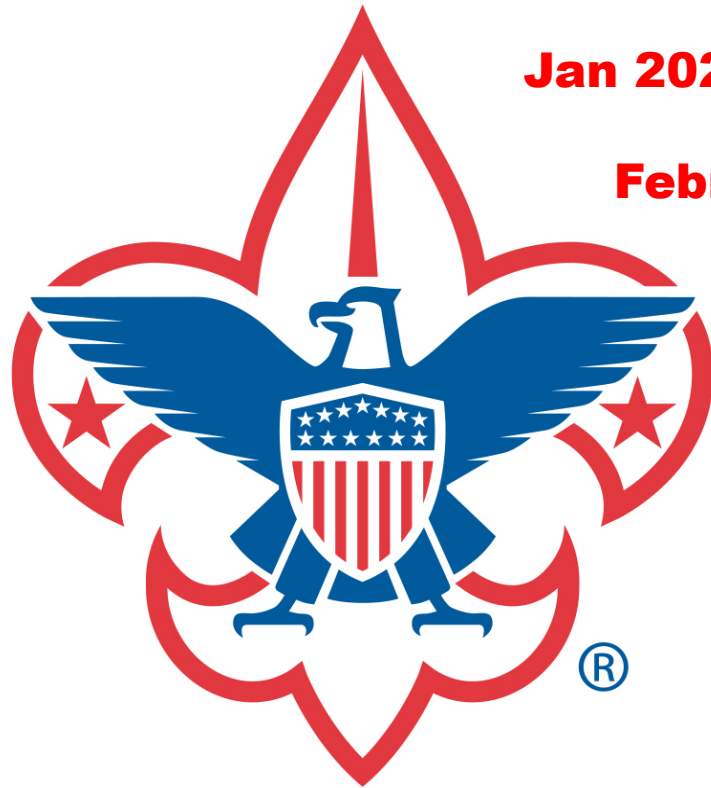
SURVIVING



RECHARTER

PACKS | TROOPS | CREWS

DUE MAY 2021



RECHARTER

PACKS | TROOPS | CREWS

DUE MAY 2021

Jan 2021 – Complete New 2022 Annual Unit Charter Agreement

February 2021 – Discuss Fee and Spring Fundraising with your Scout Families/ update YPT

March 2021 – Keep note of Scouts and Adults that are Adding/ Dropping or Transferring

April 2021 – Collect Registration Fees and Talk with your Unit Commissioner about the Recharter process

May 2 to May 31 – Receive the Access Code, Complete Online Recharter, Submit Payment Online.

June-July – Council Office Registrar reviews the Recharter corrects any errors or additions

July 31 – Council Posts Recharter to National

ROUNDTABLE



RESPONSIBLE RECREATION

COVID-19



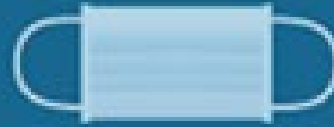
KEEP YOUR DISTANCE

Practice proper social distancing with people outside your household.



STAY HOME IF SICK

If you have a fever, respiratory symptoms or are just not feeling well, please stay home.



WEAR A MASK

When entering an indoor space or interacting with others, wear a face covering.



OBSERVE GUIDELINES

When visiting new locations, respect established capacity and safety guidelines.

Model COVID-19 Pre-Event Medical Screening Checklist

Use this checklist to assist in identifying potential COVID-19 cases before event participation.

Review with each youth and adult participant their current health status, both before departure and upon arrival at the event. Anyone entering a camp or event – including visitors, vendors, etc. – must be screened.

Councils should customize with input from their council health supervisor and local health department.

- ☐ Yes ☐ No Have you or has anyone in your household been in [close contact*](#) in the past 14 days with anyone known or suspected to have COVID-19 or is otherwise sick?
- ☐ Yes ☐ No Have you or has anyone in your household been in [close contact*](#) with anyone who has been tested for COVID-19 and is waiting for results?
- ☐ Yes ☐ No Have you or has anyone in your household been sick in the past 14 days, or have you or they been tested for any illness and are waiting for results?
- ☐ Yes ☐ No Has anyone in your household been exposed to an individual known or suspected to have COVID-19 in the past 14 days?
- ☐ Yes ☐ No Have you or has anyone you have been in [close contact*](#) with traveled on a cruise ship or internationally or to an area with a known communicable disease outbreak in the past 14 days?

**According to the Centers for Disease Control and Prevention (CDC), "close contact" means:*

- You were within 6 feet of someone who has COVID-19 for a cumulative total of 15 minutes or more over a 24-hour period
- You had direct physical contact with an infected person (hugged or kissed them)
- You shared eating or drinking utensils
- An infected person sneezed, coughed, or otherwise got respiratory droplets on you

If the answer is YES to any one of the five questions above, the participant must stay home.

If all answers above are NO, proceed to the symptoms list below.

Symptoms of COVID-19

If anyone in your household has any one of the following new or worsening signs or symptoms of possible COVID-19, the entire household must stay home.

- ☐ Shortness of breath
- ☐ Cough
- ☐ Fever of 100.0° or greater
- ☐ Flu-like symptoms
- ☐ Repeated shaking with chills
- ☐ Fatigue
- ☐ Muscle or body aches
- ☐ Headache
- ☐ Sore throat
- ☐ Loss of taste or smell
- ☐ Diarrhea
- ☐ Nausea or vomiting

Potential Higher-Risk Individuals

- ☐ Yes ☐ No Are you in a higher-risk category as defined by the [CDC guidelines](#), including older adults, people with medical conditions, and those with other individual circumstances?

If the answer is "yes," we recommend that you stay home.

Should you choose to participate, you must have approval from your health care provider.

680-057 • 12/20 Revision



Restart Scouting Checklist

As always, the safety of our Scouts, volunteers, employees and communities is our top priority. This checklist outlines several minimum guiding protocols that adult leaders/volunteers must consider while working with local and state health departments, local councils, chartered organizations and Scouting families on when and how to resume meetings, service projects, camping and all other official Scouting activities.

If it is not practical to meet these minimal protocols, do not restart in-person activities.

S = Supervision

- ☐ Understand local and state guidance on preventing COVID-19 exposure.
- ☐ Engage your chartered organization and local council on necessary adjustments.
- ☐ Conduct the "before you gather" protocols.

A = Assessment

- ☐ Identify participants who fall under the CDC's group of higher-risk individuals. Notify all participants about the risks of participating since COVID-19 exposure cannot be eliminated.
- ☐ Verify that the planned activity, gathering or group sizes are not prohibited by local or state orders.

F = Fitness and Skill

- ☐ Review Annual Health and Medical Records and consider using a [pre-event screening](#) for all participants.

E = Equipment and Environment

- ☐ Verify that handwashing, hygiene and cleaning supplies are available and used properly.
- ☐ Monitor social distancing, interactions and sharing of equipment and food among participants.
- ☐ Monitor participants for changing health conditions.
- ☐ Use the "as you gather" protocols.

SAFE ≠ Risk-Free

As the response to the pandemic shifts to a state-focused, phased approach, the Boy Scouts of America advises local councils to consult with their local and state health departments, as well as local chartered partners, to implement appropriate protocols to help keep our members, volunteers and employees safe.

Precautions and mitigation strategies are important, but they cannot eliminate the potential for exposure to COVID-19 or any other illness when in-person activities resume.

People with COVID-19 may show no signs or symptoms of illness, but they can spread the virus. Some people may be contagious before their symptoms occur. The fact is that someone with COVID-19 may pass the required health screenings and be allowed into program activities.

The Centers for Disease Control and Prevention (CDC) states that older adults and people of any age who have serious underlying medical conditions are at higher risk for severe illness from COVID-19. If you are in this group, please ensure you have approval from your health care provider prior to resuming in-person Scouting activities.

Every member, volunteer and family must evaluate their unique circumstances and make an informed decision before attending in-person activities.

We hope this information will be helpful as you make that choice.

For updates, please monitor <https://www.scouting.org/coronavirus>

2021 SPRING POPCORN SALE

MARCH 5 - APRIL 16



A young boy in a Boy Scout uniform is speaking into a microphone on a stage. The stage is decorated with a large wooden arrow, a blue banner with a Scout logo, and a blue banner that reads "PACK 206". There are also candles and a large log on the stage. The background shows a room with large windows and other people.

Need Space for your:
Blue Gold or Pinewood Derby

Consider Reserving the
Woods Room @
Cornhusker Council Outdoor
Education Center

Contact Paula @ 402- 488-6020



Schedule your Friends of Scouting 2021
[Click Here](#)

FIRE STARTER

\$100 monthly donation or \$1,000 full donation



We'll honor you by placing your name as a Fire Starter on our Cornhusker Council website for one year with your commitment of donating for 12 months.

- **CUB CLUB**- \$15 monthly donation – provides materials for one activity for one Cub Scout monthly
- **TENDERFOOT TEAM** - \$30 monthly donation – provides the funding for one experience for one Scouts BSA youth monthly
- **GOOD TURN ENTHUSIAST** - \$50 monthly donation – provides one opportunity and materials for a community service project for one Eagle Scout monthly



TRAILBLAZER
CLUB



**Grab some Scout popcorn
and enjoy the
Virtual Midway.**

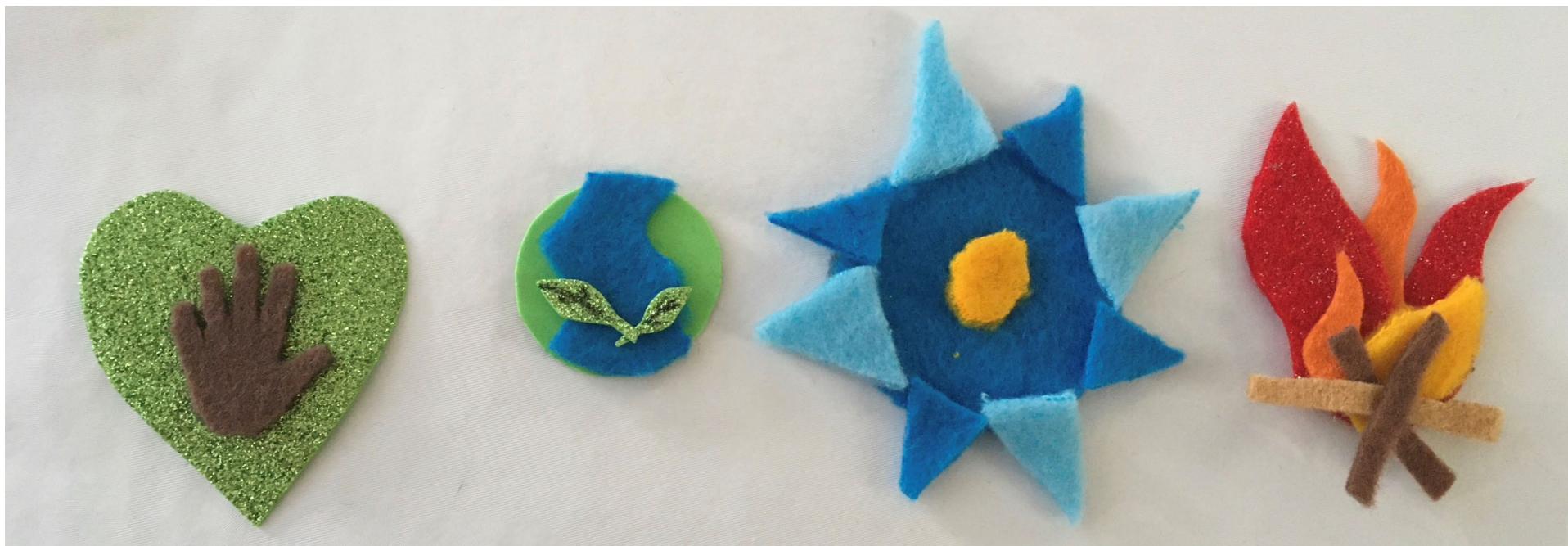
**Round Table Main Session
Begins at 7:00PM**

January

February

March

April



SLIDE OF THE MONTH

A photograph of a movie theater interior. In the foreground, the backs of several audience members' heads are visible as they sit in rows of red seats. The theater's walls are decorated with vertical gold and red stripes. At the front of the theater, a large screen displays the words "coming soon" in a white, stylized, outlined font. The background of the screen features a vibrant, abstract pattern of blue and green light rays radiating from a central point, interspersed with orange and red cylindrical shapes and glowing spheres.

coming
soon

Don't miss this training, April Roundtable.



In person skills portion on Saturday April 3rd 2021

**Indoor Climbing Wall
Open for business
at the OEC**

**Limit of 12 Climbers
Call 402-488-6020
to reserve your spot**



New
Training Dates
April 1-3 & 23-24 2022



WOOD BADGE
Advanced Training for all Scout Leaders

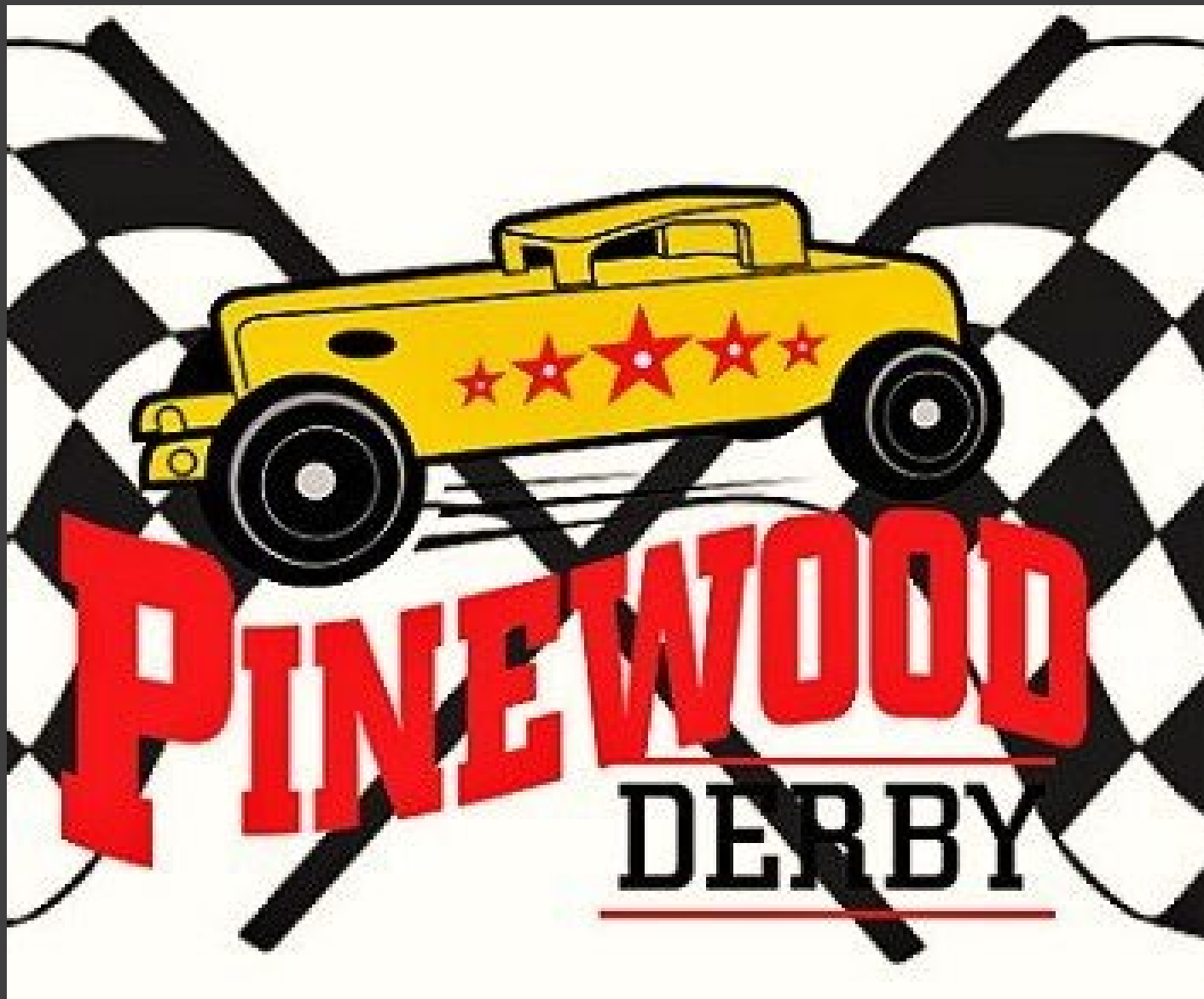
SIGN UP HERE
18-23 July 2021



SVD Virtual PWD



Car Check in: March 19-24
Race Airs: April 24th





**Registration
Now
Open**



DINO - ROAR OEC WEEKLONG DAY CAMP
JUNE 14-18 2021

CUB CAMP
SIGN UP **2021**

1 Webelos Session 1
July 7th- July 10th

2 Webelos Session 2
July 11th- July 14th

3 Webelos Session 3
July 14th- July 17th

4 Cub Resident Camp
July 17th- July 19th

Webelos open for all 4th
and 5th grade Scouts

Cub Resident open for all 1st,
2nd, and 3rd grade Scouts

Visit our website for more info
<https://www.cornhuskercouncil.org/camping/cubcamps/>

Made with PosterMyWall.com

CUB CAMP
SIGN UP **2021**

1 Webelos Session 1
July 7th- July 10th

2 Webelos Session 2
July 11th- July 14th

3 Webelos Session 3
July 14th- July 17th

4 Cub Resident Camp
July 17th- July 19th

Webelos open for all 4th
and 5th grade Scouts

Cub Resident open for all 1st,
2nd, and 3rd grade Scouts

Visit our website for more info
<https://www.cornhuskercouncil.org/camping/cubcamps/>

Made with PosterMyWall.com



2021 Webelos Resident Camp

Session 1: July 7th – July 10th, 2021

Session 2: July 11th – July 14th, 2021

Session 3: July 14th – July 17th, 2021

Parents and Unit Leader's Guide
[Now Available \(Click Here\)](#)

2021 Cub Scout Resident Camp

July 17th to July 19th, 2021

For Tigers, Wolves and Bears

Parents and Unit Leader's Guide

[Now Available \(Click Here\)](#)





PINEWOOD

DERBY

OUTLAW



Spring Camporee April 16-18 2021

ROUNDTABLE





LOVE TO BIKE?
JOIN A VENTURING
CREW
FOR YOUTH 14-21



**Grab some Scout popcorn
and enjoy the
Virtual Midway.**

**Round Table Main Session
Begins at 7:00PM**

FUN and GAMES





Caption this
Photo in the
Chat.

Caption this
Photo in the
Chat.






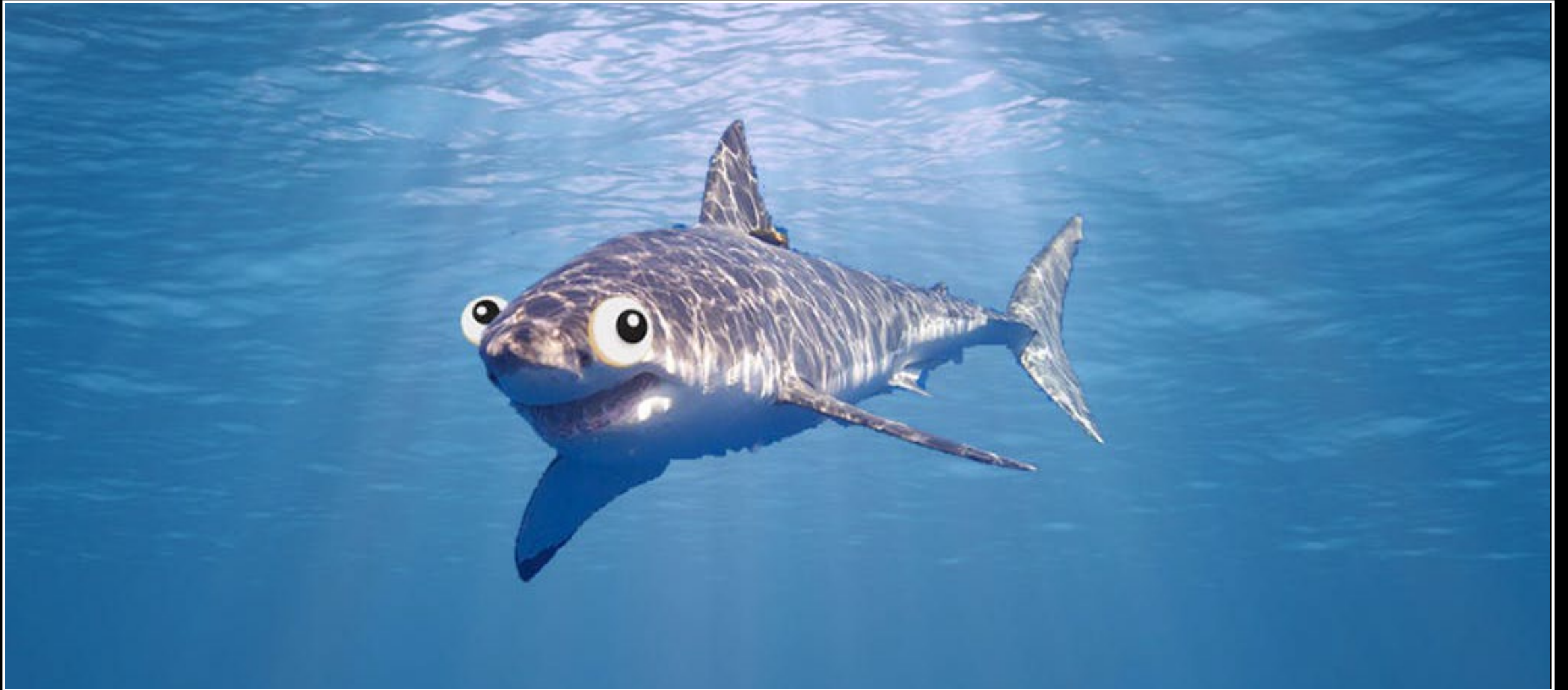
Caption this
Photo in the
Chat.



Caption this Photo in the Chat.

A close-up photograph of a pig's head and front legs. The pig has light brown, curly fur and a pink snout. It is wearing four bright red rubber boots. The pig is standing in a dark, wet puddle, and its front legs are visible in the boots. The background is out of focus, showing some green foliage.

Caption this
Photo in the
Chat.



Caption this Photo in the Chat.

STAY INFORMED ATTEND ROUNDTABLE

[View this info @
https://www.cornhuskercouncil.org/about
us/districts.html](https://www.cornhuskercouncil.org/about-us/districts.html)



[Click here to
view all this
great
information](#)

Send a representative from your Pack or Troop to stay informed on upcoming events, program updates and trainings.



ROUNDTABLE

Why I'm a Scouting Leader

